

Assembly Instructions

Description:	Rear Speaker Kit	Model:	Vulcan 1700 Voyager
Part Number:	K10400-039	Approximate Assembly Time:	30 min.

Before you begin installation, read through the installation instructions and check to be sure all parts are present.

If you are in doubt as to any part of the installation, please ask your authorized Kawasaki dealer to complete the installation. Please note that Kawasaki cannot assume any responsibility for damage resulting from incorrect installation.

Parts List			Tools Required:
Seq.	Description	Qty	Tool Description
1.	LH Speaker Enclosure	1	<ul style="list-style-type: none"> ▪ Scribe ▪ Drill Motor ▪ 1/16" Drill Bit ▪ 8mm (0.315") Drill Bit ▪ Socket Driver ▪ 10mm Socket
2.	RH Speaker Enclosure	1	
3.	6x30mm Button Head Screw	6	
4.	Reinforcement Plate	4	
5.	Cable Tie	3	

Installation Instructions

Installation Preparation

Parts Removal

- Set bike securely on side stand on level ground.
- Remove driver and passenger seats.

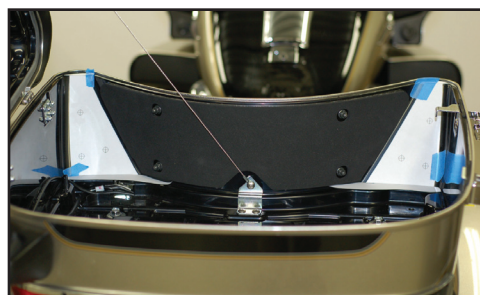
Install speaker enclosures

- Locate the speaker drilling templates on the last page of the instructions. Remove the templates, then cut and fold as indicated. Apply the left and right drilling templates to the inside of the trunk as shown.

NOTE

- Use tape to apply the template. Lay it next to the corner radius.

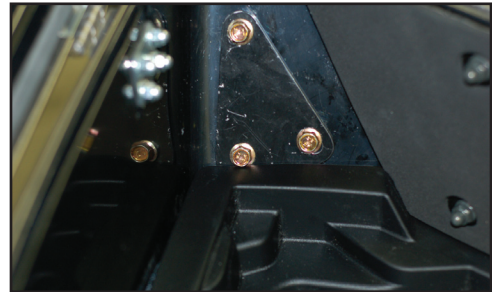
- Once the templates are correctly positioned, carefully mark the holes with a scribe. Do not use a punch as the plastic may be damaged. Drill pilot holes from the inside using a 1/16" bit, then finish drilling all six holes from the outside using an 8mm (0.315") bit.



- Mount the right speaker enclosure with the supplied 6 x 30mm screws using a reinforcement plate on each side of the trunk face (see photo). Tighten the three screws securely but do not overtighten.



- Mount the left speaker enclosure using the same method described above.
- Reinstall the trunk liner.



NOTE

- *Slight trimming of the trunk liner tray may be needed to provide clearance for the lower speaker screw.*

- Route the speaker wires from the speaker enclosures to the trunk frame cross member and secure the wires with provided cable ties. Continue to route the wires as shown and secure with additional cable ties.



- Connect the left speaker wire to the natural (clear) chassis harness connector and the right speaker wire to the black chassis connector.
- Refer to the VN1700 Voyager Owner's Manual for setting the front-to-rear speaker fade. The front and rear speakers can also be turned off when using the optional helmet headsets.



Re-Install Removed Parts

- Reinstall the front and rear seats, making sure that there are no wires pinched by the seat posts.

Please check / adjust all screws in regular intervals.

Speaker enclosures may be cleaned with a damp cloth and soap solution if needed. While the speakers are water resistant, do not direct water streams at the speakers. Do not use hard abrasive cleaners.

